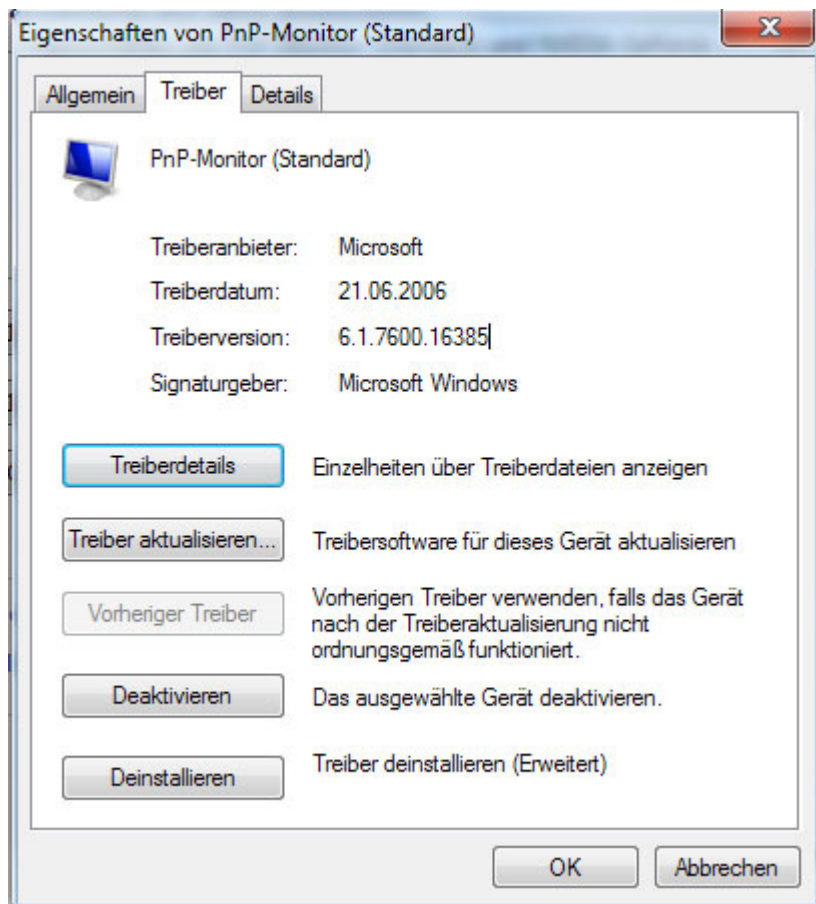


## Display driver for CarTFT-displays with 800x480 resolution

The display driver enables the resolution 800x480@71Hz for „True-800x480“-compatible CarTFT-displays with Windows Vista and Windows 7.

### Short installation guide :

1.) Open display properties and choose „Update driver“ :



2.) Then choose „Search on computer for drivers“ (Picture 2a.) and then „Choose from a list of drivers“ (Picture 2b).

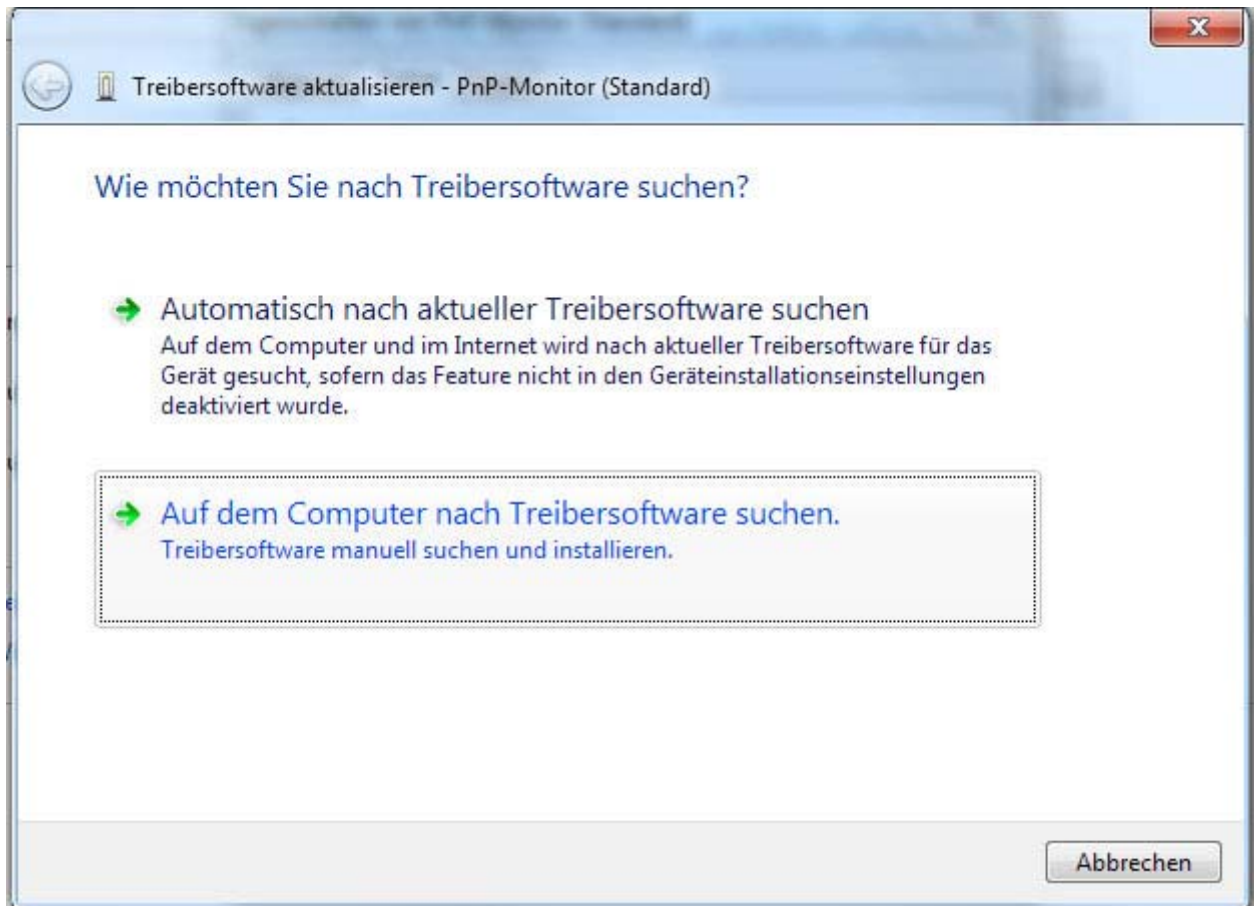
3.) Now choose „Have disk“ (Picture 3a.), then choose the included file „CarTFT\_800x480.inf“. You can see Picture 3b when everything went well.



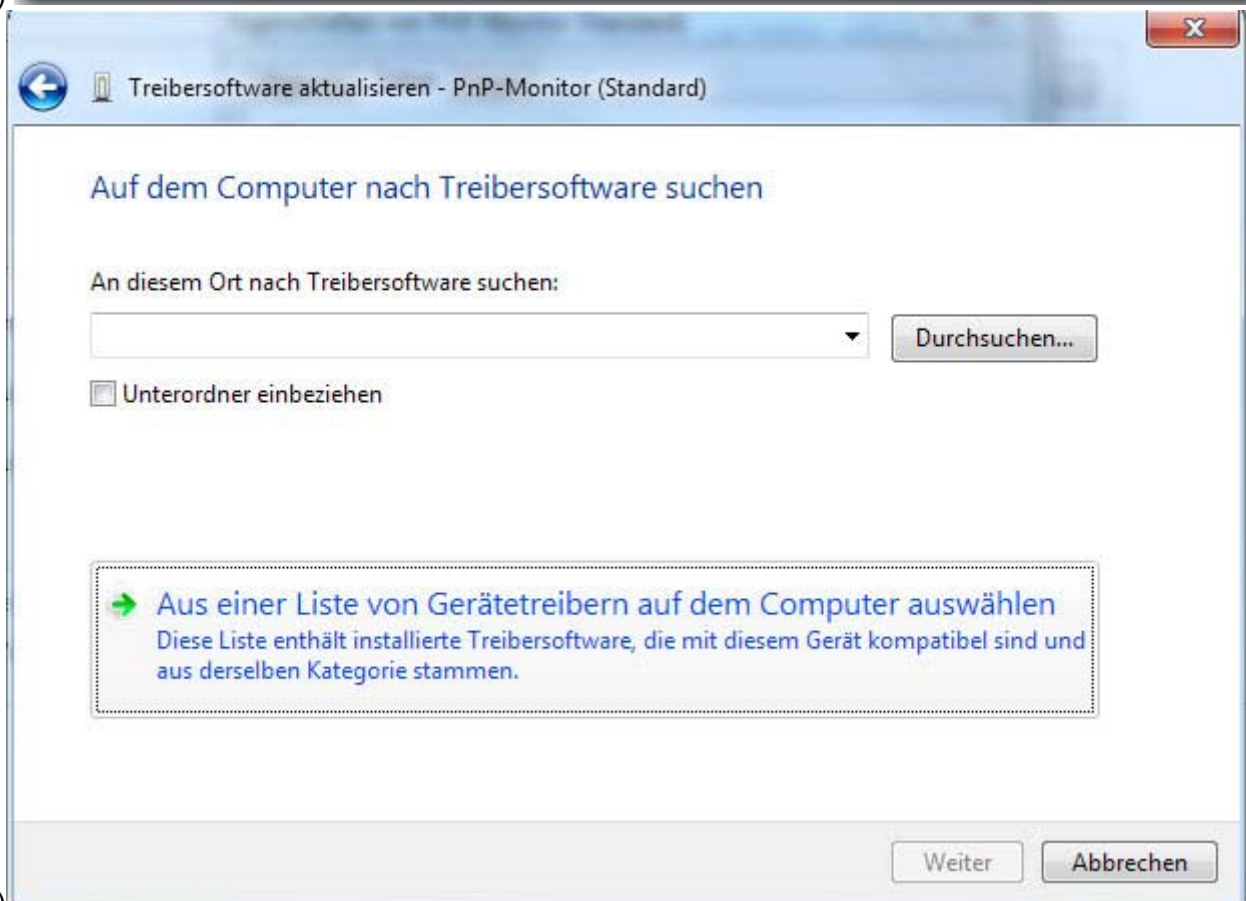
CARTFT.COM

Shop for mobile  
PC- and GPS-Solutions

Power Up Your Car



2a.)



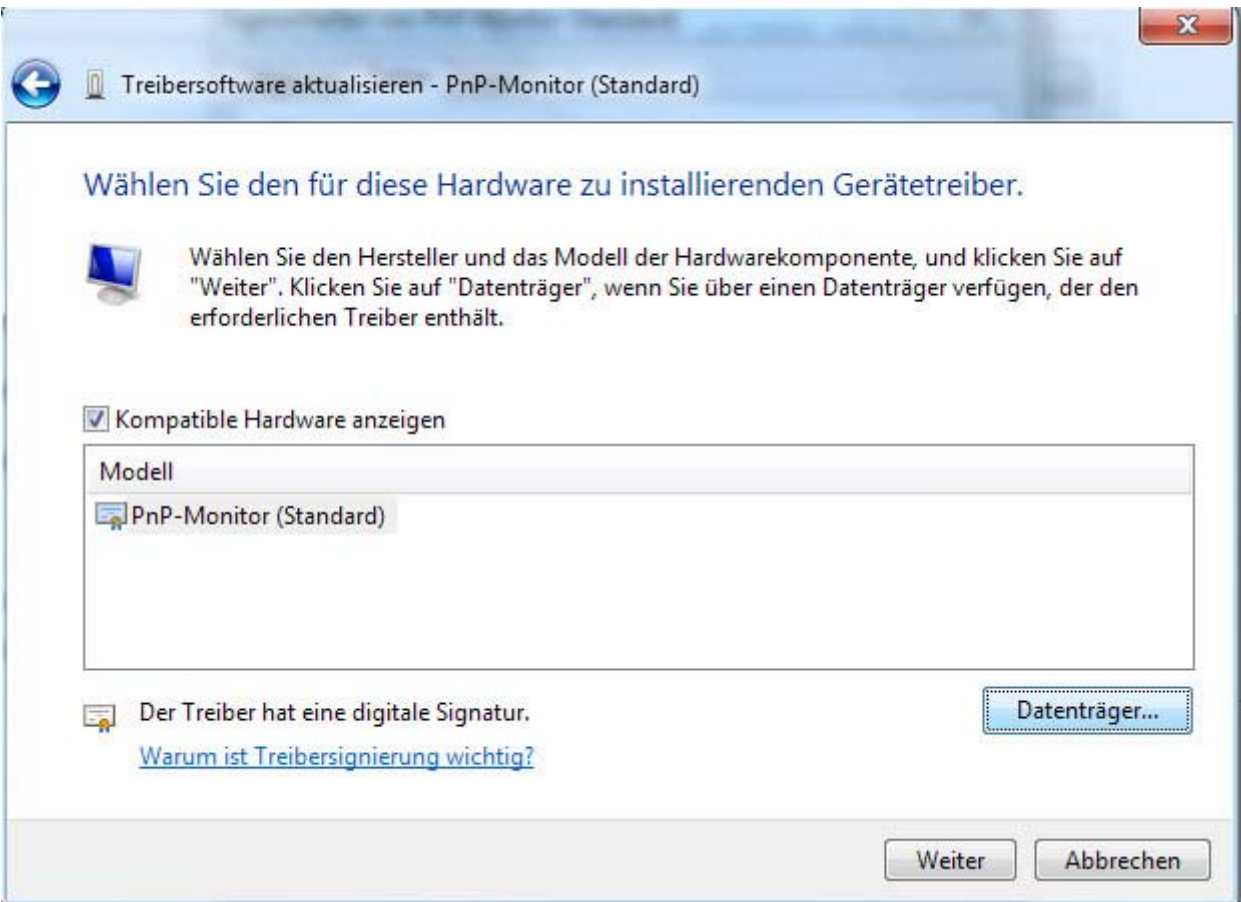
2b.)



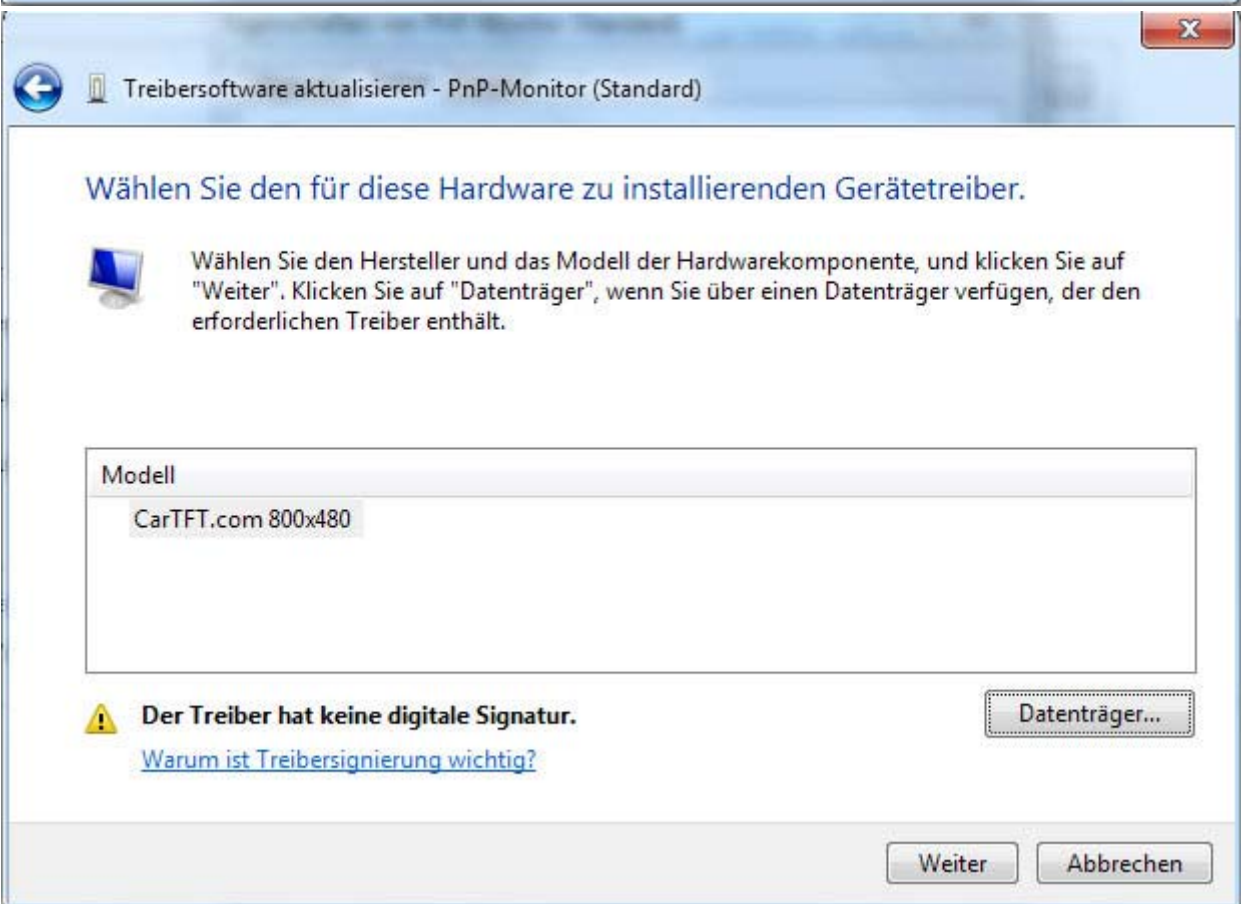
CARTFT.COM

Shop for mobile  
PC- and GPS-Solutions

Power Up Your Car



3a.)



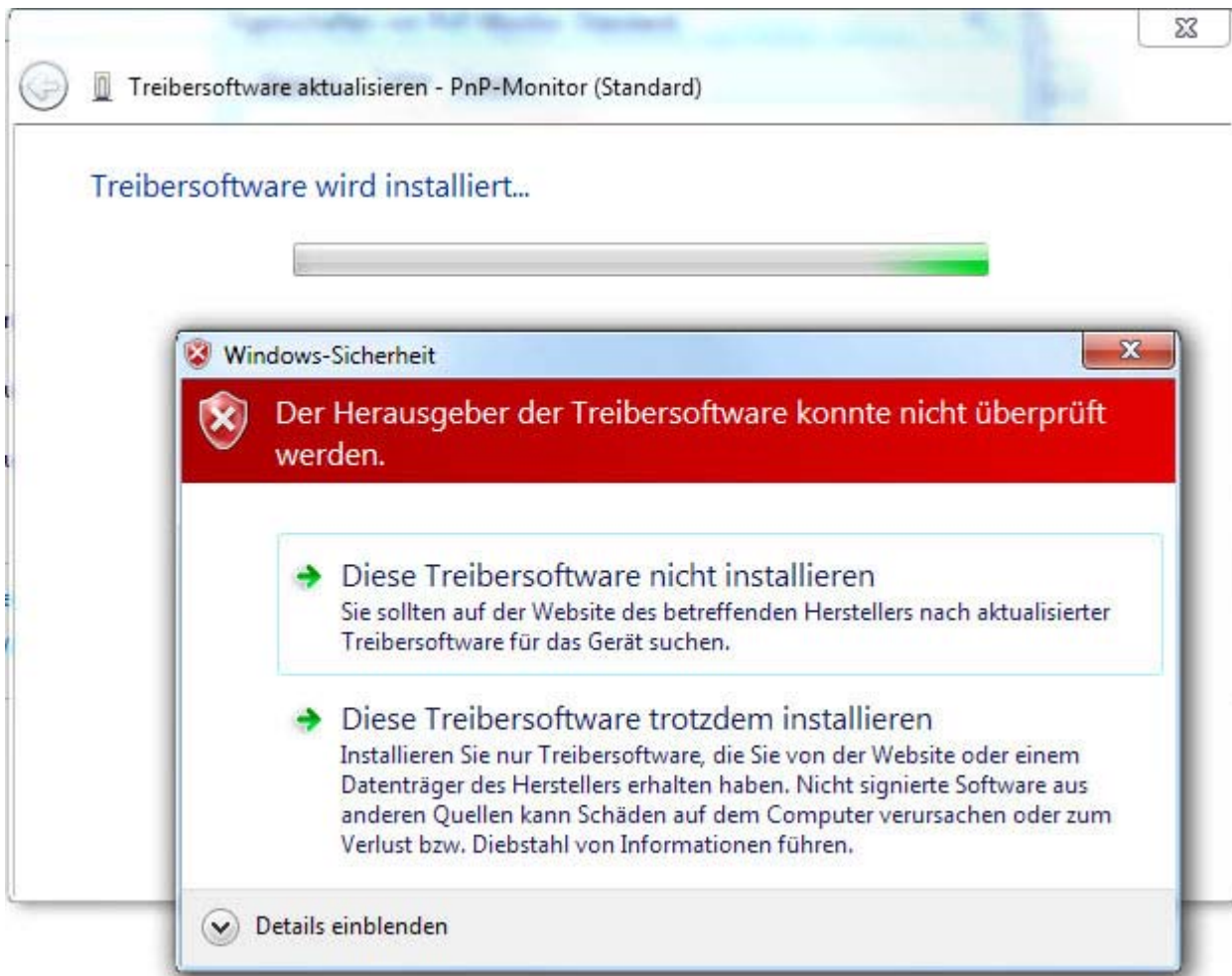
3b.)



**CARTFT.COM**  
Shop for mobile  
PC- and GPS-Solutions

Power Up Your Car

4.) Confirm the security warning with „Install the driver anyway“.



After PC-reboot the resolution 800x480@71Hz (32-bit) should be available.

With Intel graphic adapters sometimes an additional procedure is necessary (see next page).



## Customizing with Intel graphic drivers

You need the program „DTD Calculator“, which you can download here :

<http://www.cartft.com/support/drivers/TFT/tftdrivers/setupdtd102.exe>

1.) Program start, Tab „Registry Hack“ :

[illegible]



**CARTFT.COM**  
Shop for mobile  
PC- and GPS-Solutions

Power Up Your Car

- 2.) Click 1x on „More“, then enter the values visible below on the left side, then click „Get Calculated“ and then on „Write DTDs to Registry“.

DTD Calculator

800x480p

Pixel Clock (MHz)  
39.1

H Active Pixels  
800

H Start of Sync Pulse  
840

H End of Sync Pulse  
920

H End of Blanking Interval  
1040

V Active Lines  
480

V Start of Sync Pulse  
500

V End of Sync Pulse  
508

V End of Blanking Interval  
531

☐ Interlaced

Sync Profile  
+hsync -vsync

Calculation Tuning Reverse Calculation Interpret EDID Registry Hack About

No of DTDs  
1

DTD 1  
46 0F 20 F0 30 E0 33 10 28 50 48 04 00 00 00 00 1A

Less More

Create Modeline Get Calculated

Before using the DTD Calculator, check your screen's specifications. Do not use values greater than those specified. Running a monitor or TV outside its normal operating values may result in damage.

**USE THIS UTILITY AT YOUR OWN RISK**

Read DTDs from Registry Write DTDs to Registry

HKLM\System\CurrentControlSet\Control\Class\{4D36E968-E325-11CE-BFC1-08002BE10318}\0006

46 0F 20 F0 30 E0 33 10 28 50 48 04 00 00 00 00 1A

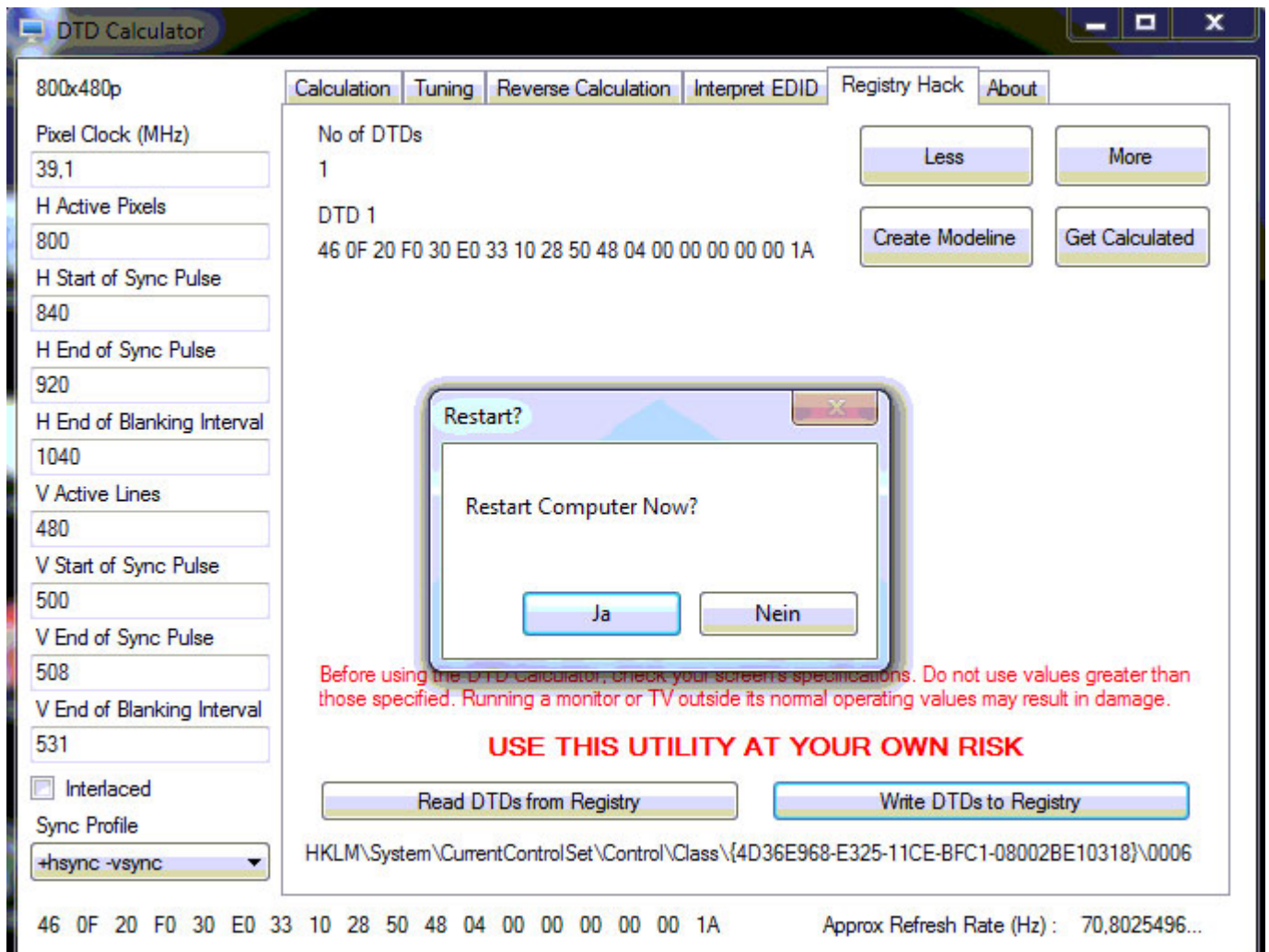
Approx Refresh Rate (Hz) : 70.8025496...



**CARTFT.COM**  
Shop for mobile  
PC- and GPS-Solutions

Power Up Your Car

3.) Confirm the reboot question.



- 4.) After reboot the dekstop will be showing resolution 800x480. If not, then choose the resolution manually under "Advanced settings", "List all modes".

